

Construction
Schedule
Winter 2019

Construction
Cost
\$9.2 Million

GET INVOLVED

The FDOT remains committed to working with all project stakeholders. No final decision will be made until we hear your comments. There are many ways to provide comments:

- ◆ Make a verbal statement during the public comment period at the hearing.
- ◆ Complete a written comment form and drop it in the comment box provided at tonight's Public Hearing.
- ◆ Mail or email your comments to the FDOT Project Manager, Chris Rhude at the address shown below.

All comments received postmarked **on or before January 24, 2019**, will be included in the Public Hearing record. Public participation is sought without regard to race, color, religion, sex, age, national origin, disability or family status.



January 10, 2019

Open House: 4:30—6:30 p.m.
Public Comment Period: 6:30 p.m.
No Presentation

Location:

Holiday Inn Express & Suites
4791 Windsor Commons Court
Jacksonville, FL 32224

Welcome to the public hearing for SR-202 (JTB) at San Pablo Road in Jacksonville, Florida. The FDOT is proposing to convert the existing diamond interchange into a diverging diamond interchange (DDI) to help ease congestion and improve safety.

Through its unique design, a Diverging Diamond Interchange (DDI) improves mobility by eliminating conflict points for motorists seeking to turn left. In a DDI, drivers crossover to travel briefly on the left side of the road and then seamlessly return to the right side of the road just after the following intersection. The DDI design improves safety and increases traffic flow through the interchange. Additionally, the limited access right of way boundary limits at this interchange will be modified allowing motorists traveling along the westbound JTB on-ramp an additional access point leading to and from the Mayo Clinic.

For Information Contact:
Chris Rhude, Project Manager
FL Department of Transportation
1109 S. Marion Avenue, MS 2002
Lake City, Florida 32025
(386) 961-7475 or (800) 749-2967
Chris.rhude@dot.state.fl.us

If you are concerned about an access management decision that affects your property or business, you can appeal to the Access Management Committee and request the opportunity to present your concerns in person or in writing.

Access Management Contact
Jerry Ausher
FL Dept. of Transportation
2198 Edison Avenue, MS 2815
Jacksonville, FL 32204
(904) 360-5630 or (800) 207-8236
Jerry.ausher@dot.state.fl.us

Follow Us On



MYFDOTNEFL



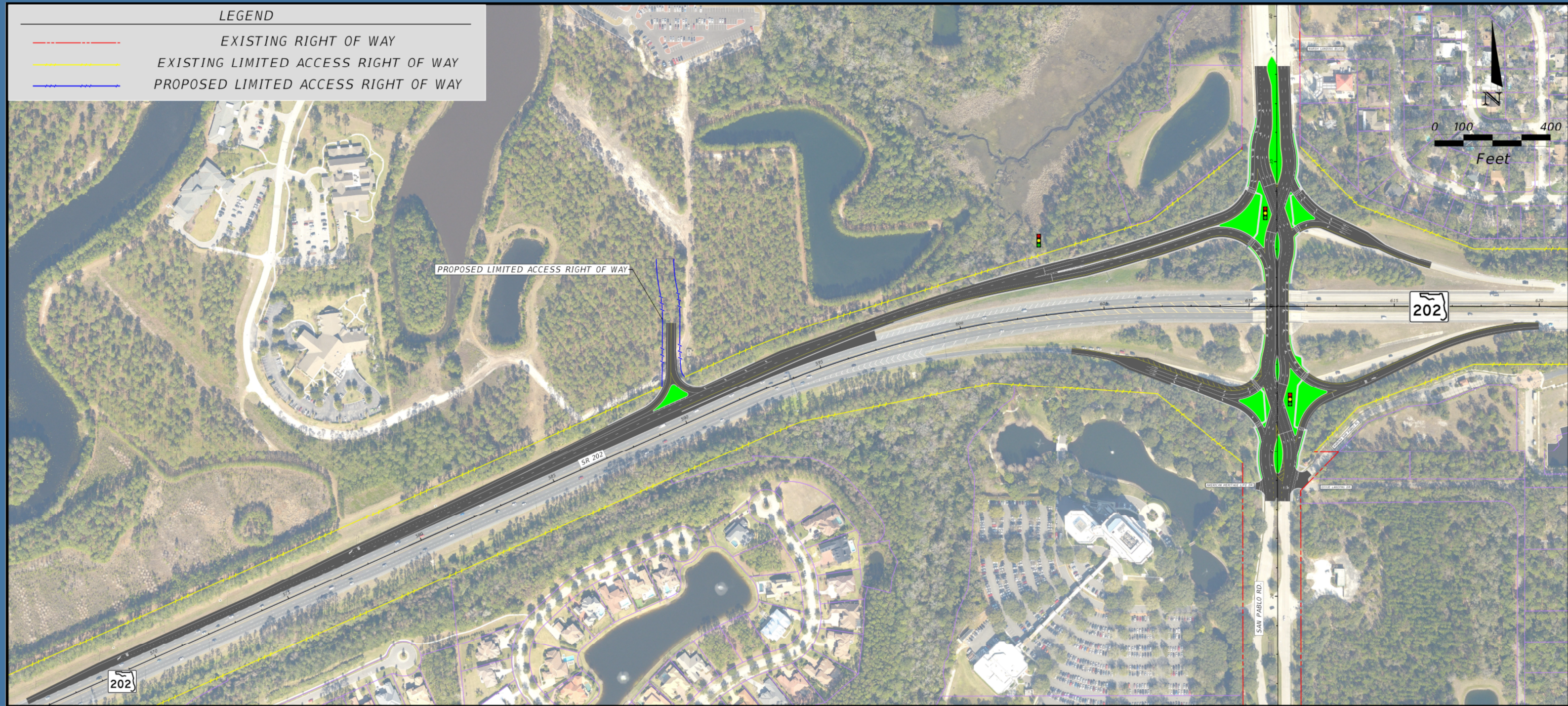
MYFDOT_NEFL



MyFDOTNEFL

To View Tonight's Materials Online Visit Our Website:
www.nflroads.com/SanPablo

SR-202 Diverging Diamond Interchange (DDI) at San Pablo Road



Projected Performance Improvements (using 2040 peak traffic forecast volumes)

- JTB eastbound off-ramp: Delay reduced by 72 to 100 seconds per vehicle
- JTB westbound off-ramp: Delay reduced by 6 to 57 seconds per vehicle
- San Pablo at Mayo Blvd Intersection: Delay reduced by 9 to 71 seconds per vehicle

Safety Improvements

- Reduction of congestion related crashes (rear-end collisions)
- Elimination of 10 vehicle-to-vehicle potential conflict points